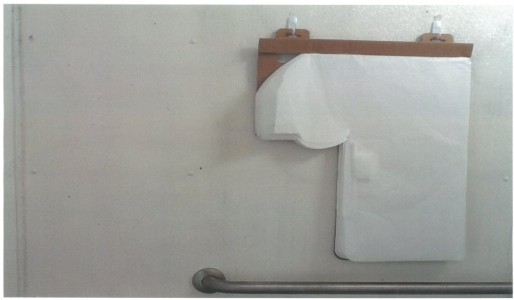


Instructions for Toilet Seat Cover and Wall

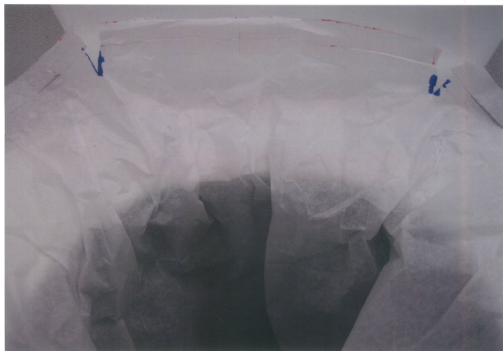
1. Hang on the wall



2. Tear only one at a time



3. Open up apparatus by tearing up the horizontal score lines



4. Insert the apparatus inside the toilet bowl. Make sure that the tip of the apparatus is inserted



5. Stick the apparatus in place on the toilet seat with the help of adhesive tape



6. The smallest and horizontal opening should be towards the front of the toilet seat as shown.



7. Nicely spread out on the toilet seat



8. After usage pick it with both hands from the edges and dump it inside the tank



Instructions for Toilet Seat Cover and Wall

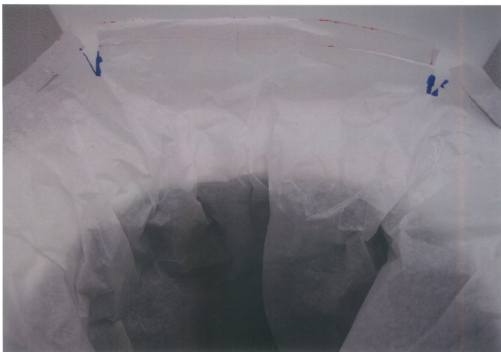
1. Hang on the wall



2. Grasp the top, protruding from the dispenser, pull up to retrieve.



3. Open up apparatus by tearing up the horizontal score lines



4. Insert the apparatus inside the toilet bowl. Make sure that the tip of the apparatus is inserted



5. Stick the apparatus in place on the toilet seat with the help of adhesive tape



6. The smallest and horizontal opening should be towards the front of the toilet seat as shown.



7. Nicely spread out on the toilet seat



8. After usage pick it with both hands from the edges and dump it inside the tank

